

ICOM

CLONING SOFTWARE

CS-A110

INSTRUCTIONS

■ Getting started

- ◇ This cloning software is designed to perform data setting and cloning for the IC-A110 AIR band transceiver.
- ◇ **HELP WINDOW:** Each item has a help window to describe functions and operation.

■ System requirements

To use this program, the following hardware and software are required:

- An RS-232C serial port
- Microsoft® Windows® 95/98/98SE/Me/2000/XP
- OPC-478/OPC-592 CLONING CABLE

■ Software installation

NOTE: Before using the program, make a backup copy of the original disk. After making a backup copy, keep the original disk in a safe place.

NOTE: Depending on your Windows® system files, the PC may require rebooting. In this case, repeat the installation from the beginning.

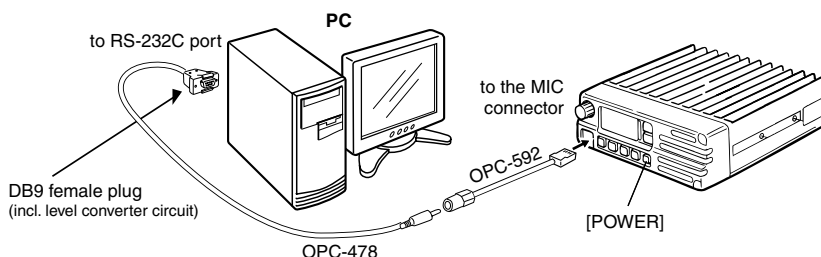
When installing into a Windows XP or Windows 2000 environment, log in as the **administrator**.

◇ Installation

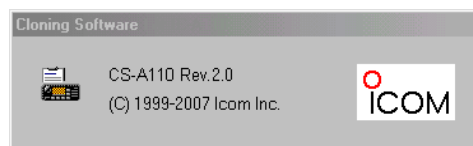
- ① Boot up Windows.
 - Quit all applications when Windows is running.
- ② Insert the CD into the appropriate CD drive.
- ③ Double-click the "Setup.exe" contained in the CD.
- ④ The "Welcome to the InstallShield Wizard for CS-A110" will appear. Click [Next>].
- ⑤ The "User Information" will appear, then type your name, your company name and the product ID number with the following manner.
 - ID number: 227702-(6 digit serial number)
 - e.g. the serial number on the CD is 000001, enter "227702-000001" as the ID number.
- ⑥ Follow the prompts.
- ⑦ Program group 'CS-A110' appears in the 'Programs' folder of the start menu, and 'CS-A110' short cut icon appears on the desktop screen.
 - To uninstall the cloning software, select the "Control Panel" in the start menu, and click the "Add or Remove Programs." Then, select the program group 'CS-A110' and click [Change/Remove].

■ Connections

All cloning operations are performed from the computer's keyboard—the operation required on the transceiver side is:
Turn the transceiver's power ON.



■ COM port setting

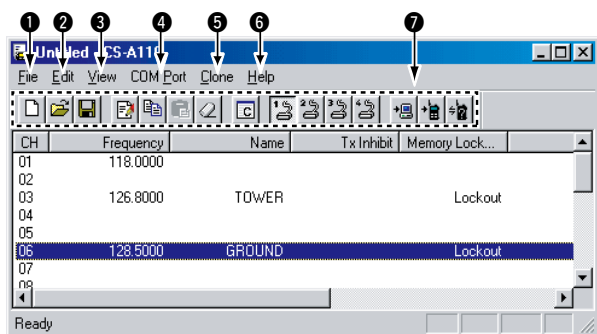


Set the com port (RS-232C port) number properly.

NOTE: 'Check the following' dialog box appears when the RS-232C serial port is not set correctly.

NOTE: When first using this software, read out all the transceiver cloning data into the PC before starting editing with this cloning software. Otherwise the cloning data may not be cloned properly to the transceiver. (e.g. memory channel setting, channel spacing, etc.)

■ Memory channel list description



1 FILE MENU [File]

Used for turning the software on/off, saving memory channel contents or quitting the program, etc.

2 EDIT MENU [Edit]

The memory channel can hold up to 99 channels. Each memory channel can be edited (copy, paste, clear, insert and delete) via the edit menu.

3 VIEW MENU [View]

- Common settings screens is selectable.
- Turn the tool bar or status bar on/off.

4 COM PORT MENU [COM Port]

Push to display the COM port setting dialog box.

5 CLONING MENU [Clone]

Push to display cloning menu and cloning information dialog box.

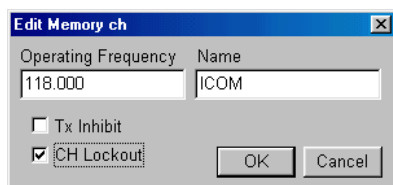
6 HELP MENU [Help]

Push to display one point help, help contents, cloning software revision information.

7 Tool bar

Short cut key appears on the tool bar when clicking the tool bar function in the [View] menu.

■ Edit Memory ch



The 'Edit Memory ch' window allows you to edit the memory channel information.

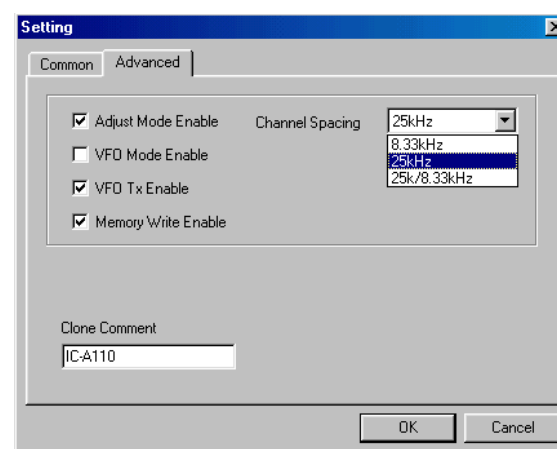
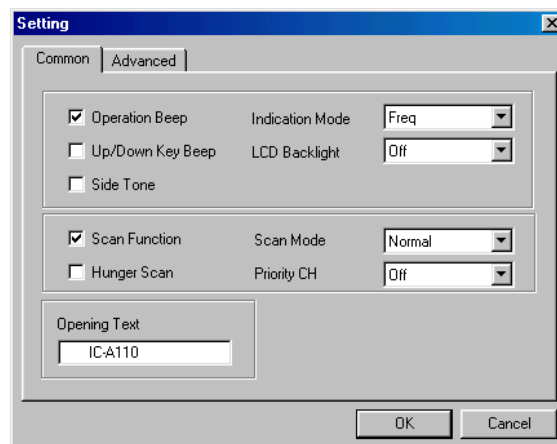
The memory channel list can hold up to 99 channels.

- When 25 kHz channel spacing is selected (see next Setting, Advanced menu), operating frequency displayed as actual frequency. On the other hand, when 8.33 KHz or 8.33/25 kHz channel spacing was selected, operating frequency displayed as channel ID. (see instruction manual p. 16)
- Even when 25 kHz spacing was selected in the Advanced screen, you can memorise the 8.33 kHz spacing frequency into memory channel.

NOTE: Read all the transceiver cloning data into the PC before starting editing with this cloning software. Otherwise the frequency data may not be cloned properly to your transceiver.

■ Common settings

There are 2 setting menus available.



Common : Commonly set items such as operation beeps, Up/Down key beeps, Side tone function, Indication mode (frequency or memory ch name, LCD back light, scan function, scan mode (normal or priority scan), hanger scan, priolity channel selection (OFF also selectable) and opening text.

Advanced : Sets Adjust mode enable (Adjust mode requires measurements equipments and service manual), VFO mode enable, VFO Tx enable and channel spacing selection (25 kHz; wide, 8.33 kHz; narrow or 8.33/25 kHz auto select).

NOTE: The above instructions are for reference only. Please refer to the HELP file of the cloning software when you don't understand the function or setting meaning.